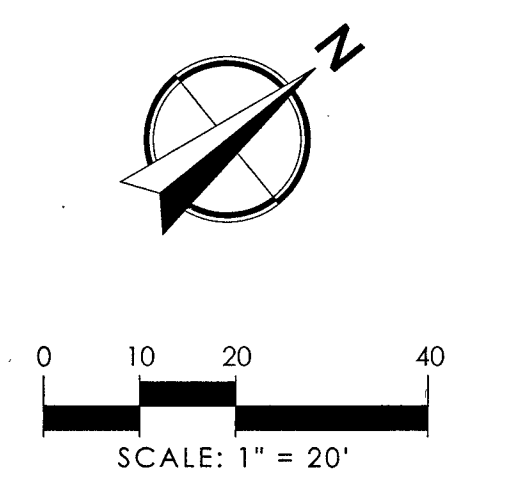
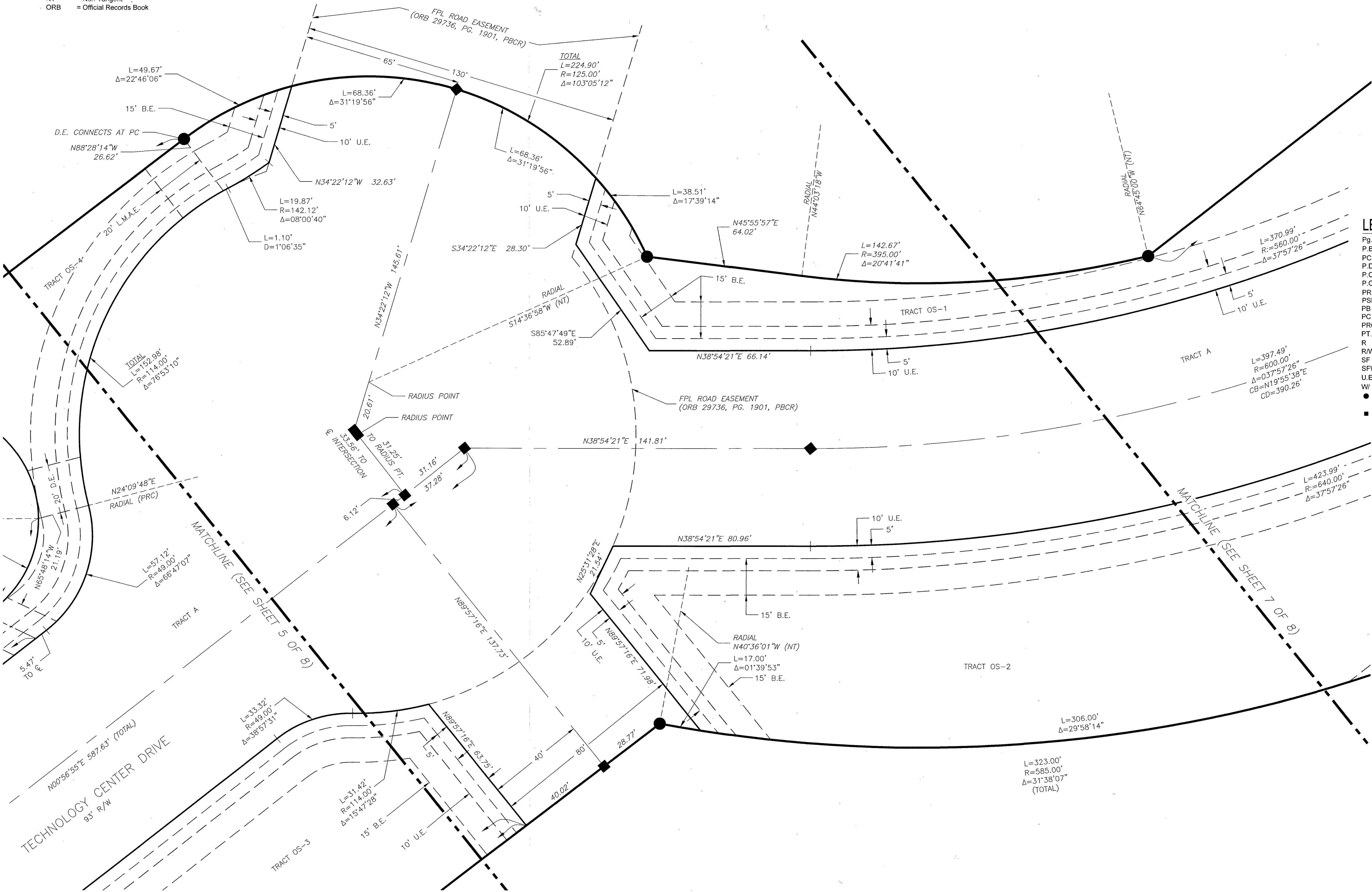


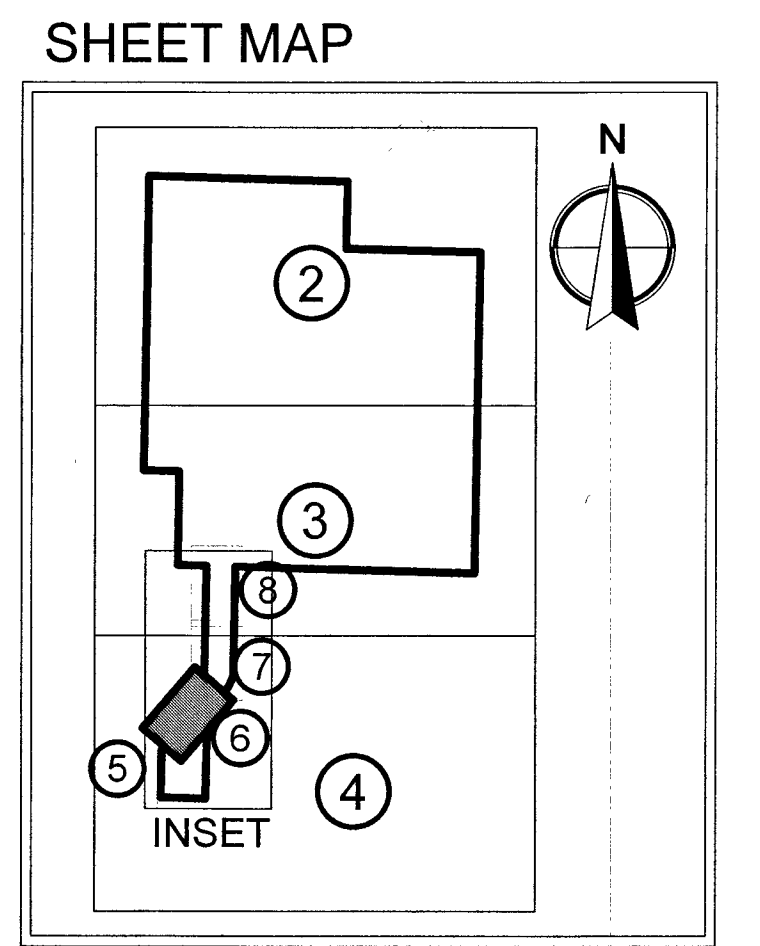
CENTRAL PARK COMMERCE CENTER MUPD

BEING A PORTION OF SECTIONS 29 & 32, TOWNSHIP 43S, RANGE 40E
PALM BEACH COUNTY, FLORIDA

- LEGEND:**
- B.E. = BUFFER EASEMENT
 - C. = Center Line
 - CB = CHORD BEARING
 - CD = CHORD DISTANCE
 - CCR = CERTIFIED CORNER RECORD
 - Conc. = Concrete
 - Δ = Delta (Central Angle)
 - DB = DEED BOOK
 - D.E. = Drainage Easement
 - FDOT = FLORIDA DEPARTMENT OF TRANSPORTATION
 - FP&L = Florida Power & Light
 - Frnd. = Found
 - GND = Ground
 - L = Length of Arc
 - LB = Licensed Surveying Business
 - LMAE = Lake Maintenance Access Easement
 - MTE = Mass Transit Easement
 - NAD = North American Datum
 - NT = Non-Tangent
 - ORB = Official Records Book



- LEGEND:**
- Pg. = Page
 - P.B.C.R. = Palm Beach County Records
 - PCP = PERMANENT CONTROL POINTS
 - P.D.E. = PUBLIC DRAINAGE EASEMENT
 - P.O.B. = POINT OF BEGINNING
 - P.O.C. = POINT OF COMMENCEMENT
 - PRM = Permanent Reference Monument
 - PSM = Professional Surveyor & Mapper
 - PB = Plat Book
 - PC = Point of Curvature
 - PRC = Point of Reverse Curvature
 - PT. = Point of Tangency
 - R = Radius
 - R/W = Right-of-Way
 - SF = SQUARE FEET
 - SFWMDD = SOUTH FLORIDA WATER MANAGEMENT DISTRICT
 - U.E. = Utility Easement
 - W = With
 - = SET 5/8" IRON ROD & ALUMINUM CAP STAMPED "LB 7055 PRM"
 - = SET PCP BEING A NAIL AND DISK STAMPED "LB 7055 PCP"



NOT TO SCALE

SHEET 6 OF 8

THIS INSTRUMENT WAS
PREPARED BY JIM SULLIVAN

2035 Vista Parkway, West Palm Beach, FL 33411
Phone No. 866.909.2220 www.wginc.com
Cert No. 6091 - LB No. 7055